

DATASHEET

# Network Insight with Advisor

## NETWORK INSIGHT KEY FEATURES

- **Comprehensive, Tunable Network Discovery:** Gathering current infrastructure and device data provides visibility and enables action on networks and devices not currently managed within your IPAM database. Comprehensive switch-port data supplies port resource management, “use next available port” and “port reservation” features. Tunable discovery supports “black out” schedules and switch-port operations by network needed to deliver critical uptime and response requirements.
- **Authoritative Network Database:** A single interface for viewing protocol, network infrastructure (layer-2 and layer-3 devices), end-host, connectivity, switch-port and all related IP data empowers IT. Reduce mean time to repair (MTTR), exclude the network as a root cause for issues and confidently automate processes.
- **Streamlined Workflows:** A single user interface simplifies the wide-variety of network management tasks including discovery, port control and permission requests for managing core network services. Template-driven and automated, multistep processes ensure accuracy and improve efficiency.
- **Infoblox Grid™ Integration:** Network Insight’s Network Data (ND) appliances are linked with a unified, embedded database technology to provide a single point of management and seamless updates with zero downtime, built-in security and resiliency.

reduces security and service interruption risk through the detection of rogue devices, errors and unmanaged devices and networks that go unseen in standard IPAM tools. Network Insight’s comprehensive inventory of switch-ports makes port-resource management easy. Network Insight automates data collection and correlation for visibility, analysis, design validation, provisioning, troubleshooting, managing and delivering effective core network services.

## Network Insight

### Network and Device Discovery, Visibility, Automation and Control

Digital technologies are radically changing the network landscape. Direct access to public and hybrid cloud applications from everywhere is expanding the network perimeter. SaaS is delivering a fast, efficient, always-on customer experience. SD-WAN is powering remote user and branch access, while wireless, IoT and 5G are dynamically increasing network resource connectivity demands.

Responding to these changes is further complicated as data is created and managed by different teams at different times with different tools and data objectives. Manual, inefficient, error-prone processes, limited and suboptimal resource utilization and rework strain the OpEx budget and teams responsible for managing core network uptime and availability. Ultimately, if you cannot see what’s on your network, you cannot manage it.

### Establish Authoritative IPAM

Infoblox Network Insight, a key component of the Infoblox DNS, DHCP and IPAM (DDI) solution suite, uses distributed probes and a central data consolidator to provide a continuous import of IP and network addresses, convert discovered assets into IPAM objects and sync them into a central authoritative IPAM database. This delivers precise visibility, accuracy and shorter, integrated workflows, improving operational efficiencies, resource utilization, lower operational costs and data confidence for workflow automation.

### Pinpoint Network Visibility

Network Insight reduces IT silos through shared access to the integrated, authoritative database of protocol, IP address, network infrastructure device, end-host, connectivity and port data. It

## NETWORK INSIGHT KEY BENEFITS

- **Gain Detailed Network Visibility:** Discover all layer-2 and layer-3 devices, end-hosts, connectivity, switch-port and VLAN data, and gain full visibility into VRF and NATed space via distributed probes and a central consolidator.
- **Detect and Resolve Conflicts:** Detect rogue and compromised assets and remediate conflicts across devices and network ports.
- **Drive Automation:** Automate controls to improve resource and workflow efficiencies. Allocate IP addresses and ports from a single UI. Directly control port administration status.
- **Optimize IT Resources:** Use built-in controls and automation to redeploy resources for higher-value work.
- **Reduce Service Interruption Risk:** Easily validate network designs and quickly identify misconfigured networks, switches and misplaced servers.
- **Scalability:** Manage mergers and acquisitions (M&As) without network outages due to overlapping IP addresses, lost knowledge or missing network architecture documentation.
- **Cross-Functional Collaboration:** When security, server, and network teams share current authoritative data, they can make quick, reliable decisions, delegate tasks and eliminate departmental dependencies.

## Drive Operational Efficiencies

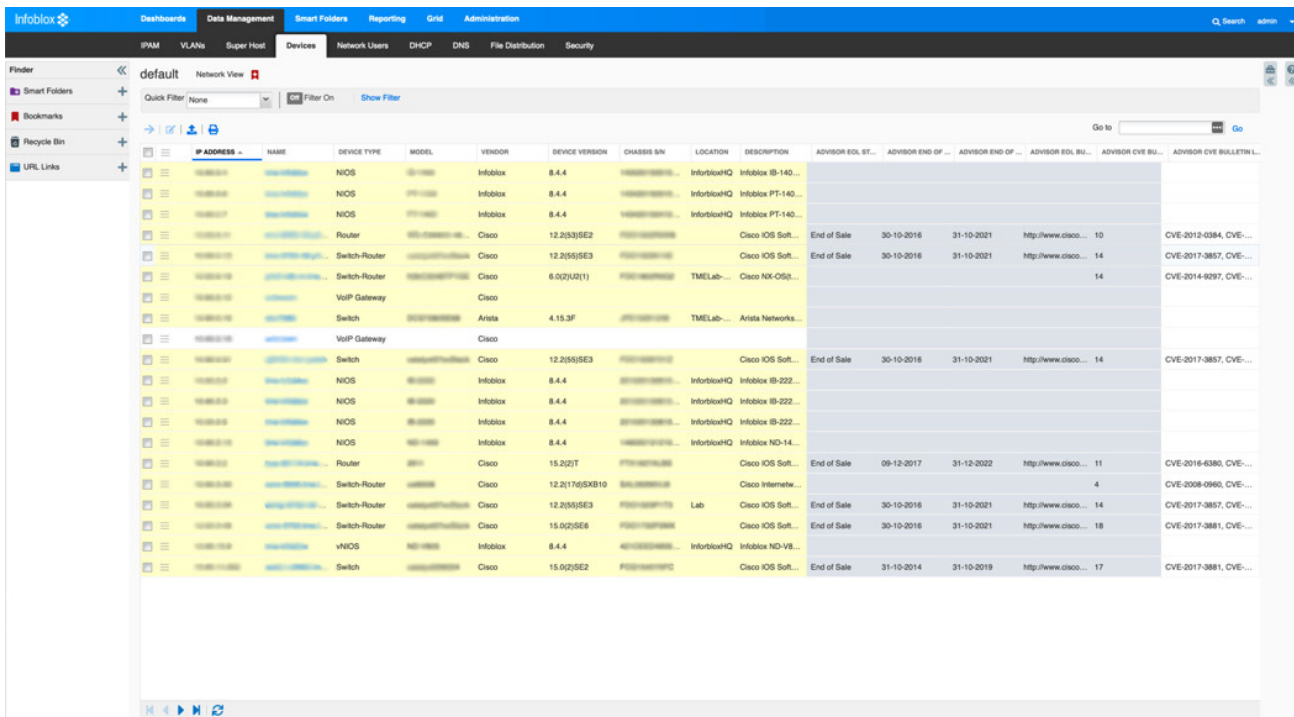
Streamline operations with integrated workflows. Provision, troubleshoot and remediate errors, and manage switch ports from a single UI. Aggregated network data improves decision-making and network operations by delivering contextual information, automation and control. Configurable, role-based administration enables IT teams to redeploy resources for more strategic, higher-value engagements.

## Automate and Control Workflows

Built-in controls ensure that your network is connected and running as designed. With Network Insight's authoritative IPAM database, end-host, connectivity and core network services data, you can compare planned changes with discovered results, automate workflows across IT teams and reduce time, effort, errors and rework. Automatic IP address and port usage detection identifies conflicts and improves accuracy. Conflicts are flagged when a discovered IP address or reserved ports are associated to another endpoint outside the original reservation. Such accurate data supports "use next" for IP addresses and ports, making provisioning simple, reliable, automated and within your control.

## Manage with an Easy, Unified User Interface

Network Insight's user interface is very easy to use and enables you to see everything on your network through a single pane of glass. Since Infoblox is founded on DNS, DHCP and IPAM data, the device tab displays all level-2 and level-3 devices along with all device and network attributes and parameters. By selecting a device, users can see the summary and forensic data of all the associated interfaces, networks, IP addresses, ports, VLANs, users and end-hosts present on the network.



IP ADDRESS	NAME	DEVICE TYPE	MODEL	VENDOR	DEVICE VERSION	CHASSIS SN	LOCATION	DESCRIPTION	ADVISOR EOL ST...	ADVISOR END OF ...	ADVISOR END OF ...	ADVISOR EOL BU...	ADVISOR CVE BU...	ADVISOR CVE BULLETIN...
10.10.10.1	10-10-10-1	NIOS	88-1000	Infoblox	8.4.4	10-10-10-1	InfobloxHQ	Infoblox IB-140...						
10.10.10.2	10-10-10-2	NIOS	88-1000	Infoblox	8.4.4	10-10-10-2	InfobloxHQ	Infoblox PT-140...						
10.10.10.3	10-10-10-3	NIOS	88-1000	Infoblox	8.4.4	10-10-10-3	InfobloxHQ	Infoblox PT-140...						
10.10.10.4	10-10-10-4	Router	3845-K9	Cisco	12.2(53)SE3	10-10-10-4	InfobloxHQ	Cisco IOS Soft...	End of Sale	30-10-2016	31-10-2021	http://www.cisco...	10	CVE-2012-0384, CVE...
10.10.10.5	10-10-10-5	Switch-Router	3750-K9	Cisco	12.2(55)SE3	10-10-10-5	InfobloxHQ	Cisco IOS Soft...	End of Sale	30-10-2016	31-10-2021	http://www.cisco...	14	CVE-2017-3857, CVE...
10.10.10.6	10-10-10-6	Switch-Router	3750-K9	Cisco	6.0(2)(R1)	10-10-10-6	TMELabHQ	Cisco NX-OS@...					14	CVE-2014-8297, CVE...
10.10.10.7	10-10-10-7	VoIP Gateway	3845-K9	Cisco		10-10-10-7	InfobloxHQ							
10.10.10.8	10-10-10-8	Switch	3750-K9	Arista	4.15.3F	10-10-10-8	TMELabHQ	Arista Networks...						
10.10.10.9	10-10-10-9	VoIP Gateway	3845-K9	Cisco		10-10-10-9	InfobloxHQ							
10.10.10.10	10-10-10-10	Switch	3750-K9	Cisco	12.2(55)SE3	10-10-10-10	InfobloxHQ	Cisco IOS Soft...	End of Sale	30-10-2016	31-10-2021	http://www.cisco...	14	CVE-2017-3857, CVE...
10.10.10.11	10-10-10-11	NIOS	88-1000	Infoblox	8.4.4	10-10-10-11	InfobloxHQ	Infoblox IB-222...						
10.10.10.12	10-10-10-12	NIOS	88-1000	Infoblox	8.4.4	10-10-10-12	InfobloxHQ	Infoblox IB-222...						
10.10.10.13	10-10-10-13	NIOS	88-1000	Infoblox	8.4.4	10-10-10-13	InfobloxHQ	Infoblox IB-222...						
10.10.10.14	10-10-10-14	NIOS	88-1000	Infoblox	8.4.4	10-10-10-14	InfobloxHQ	Infoblox ND-14...						
10.10.10.15	10-10-10-15	Router	3845-K9	Cisco	15.3(2)T	10-10-10-15	InfobloxHQ	Cisco IOS Soft...	End of Sale	09-12-2017	31-12-2022	http://www.cisco...	11	CVE-2016-6380, CVE...
10.10.10.16	10-10-10-16	Switch-Router	3750-K9	Cisco	12.2(17)SXB10	10-10-10-16	InfobloxHQ	Cisco Internete...					4	CVE-2008-0960, CVE...
10.10.10.17	10-10-10-17	Switch-Router	3750-K9	Cisco	12.2(55)SE3	10-10-10-17	Lab	Cisco IOS Soft...	End of Sale	30-10-2016	31-10-2021	http://www.cisco...	14	CVE-2017-3857, CVE...
10.10.10.18	10-10-10-18	Switch-Router	3750-K9	Cisco	15.0(2)SE6	10-10-10-18	InfobloxHQ	Cisco IOS Soft...	End of Sale	30-10-2016	31-10-2021	http://www.cisco...	18	CVE-2017-3881, CVE...
10.10.10.19	10-10-10-19	vNIOS	88-1000	Infoblox	8.4.4	10-10-10-19	InfobloxHQ	Infoblox ND-VB...						
10.10.10.20	10-10-10-20	Switch	3750-K9	Cisco	15.0(2)SE2	10-10-10-20	InfobloxHQ	Cisco IOS Soft...	End of Sale	31-10-2014	31-10-2019	http://www.cisco...	17	CVE-2017-3881, CVE...

Figure 1: Network Devices, Data Management View

## Switch-Port Inventory Dashboard Widget

Network Insight’s user interface has a variety of dashboard widgets that provide users with a quick network overview. The comprehensive inventory of switch-ports along with their current status are displayed on the switch-port dashboard widget—a perfect way to quickly understand the network’s overall condition or the current state of an important network asset.

## Network Insight and the Reporting Appliance

Network Insight adds a wealth of network discovery data to the IPAM database. With Infoblox’s Reporting and Analytics solution, this data is displayed in summary dashboards and more granular forensic reports to provide historical context for switch-port audit and compliance, real-time views and forward-looking predictive analytics. Built on the Splunk reporting and visualization engine, pre-built dashboards and reports are

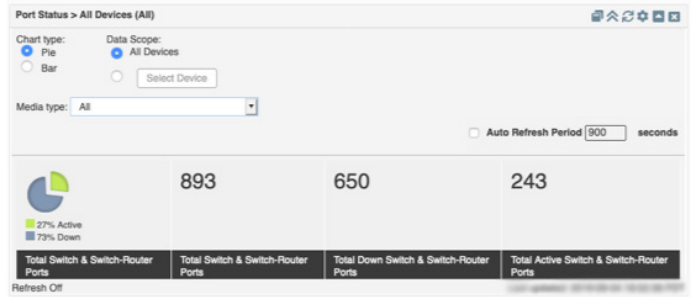


Figure 2: Port Status Dashboard, All Devices View

available and customizable to provide essential information for network management. Two such reports, Port Capacity Utilization by Device and Port Capacity Delta by Device, provide the type of historical information that helps network administrators optimize their switch-port resources.

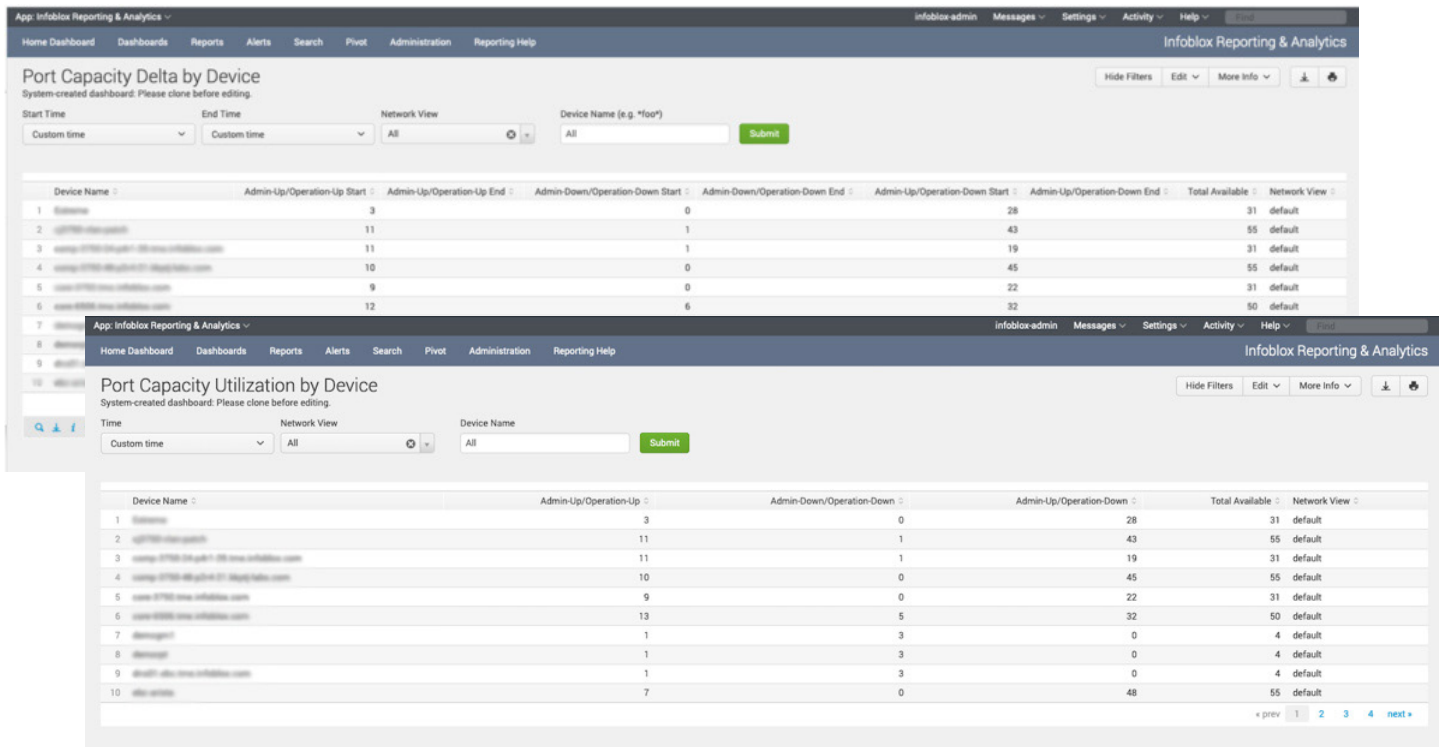


Figure 3: Port Capacity Delta and Utilization, Reporting View

## Network Insight Summary

If you cannot see what’s on your network, you cannot manage your network. Real-time discovery, historical and present visibility, future predictability and data access are essential. Network Insight is the catalyst for establishing an authoritative IPAM database. It provides tunable network discovery, a single repository for viewing network assets, DNS, DHCP and IPAM

synchronization, integrated workflows, router and switch-port provisioning and management, conflict remediation and reporting and analytics. It’s an indispensable tool for distributed discovery, IPAM integration, network automation that will save you time, money and make your job easier.

## NETWORK INSIGHT ADVISOR KEY FEATURES

- **Network Insight Advisor:** Provides an automated Security and Lifecycle Management service to Network Insight.
- **Network Insight Integrated Discovery:** Leverages Network Insight's accurate, automated, vendor-agnostic discovery, visibility, conversion of IP networks and addresses to managed assets.
- **Security Advisories:** Find devices and all applicable Security Bulletin vulnerabilities (e.g., PSIRTS and Common Vulnerabilities and Exposures (CVEs) for real-time alerting.
- **Lifecycle Management:** Detect obsolete network components based on vendor Lifecycle Management (e.g., "end-of-sale" or "end-of-support") announcements.
- **Multi-Vendor Support:** Enhance the value of your existing relationships and investments with most vendors supported out-of-the-box.
- **Continuous Reporting:** Identify vulnerable and obsolete equipment on an ongoing basis.
- **Continuous Updates:** Receive the latest announcements that apply to your infrastructure devices.
- **DNS, DHCP and IPAM (DDI) Integration:** Enrich the context of your DDI solution with end-of-life, service and security bulletins.

## Network Insight Advisor

*Device Lifecycle, Security and Compliance Notification Service*

### Ensure Device Security and Compliance

As networks diversify with solutions and vendors, the challenge of tracking security bulletins and field notices like Cisco PSIRTS and Juniper Bulletins becomes harder. The tedious, manual process of collecting and aggregating RSS feeds and emails and cross-tabulating vulnerabilities across a multitude of device models and OS versions can become overwhelming.

Network Insight Advisor automates this process to ensure your network is secure and up to date. By combining continuous rich device and network discovery with multi-vendor advisories, Advisor compares and assesses potential network device risks and alerts you to device vulnerabilities. Infoblox Advisor also helps plan future requirements by monitoring end-of-sale and end-of-support information.

### Engage Always-On Analysis of Security and Lifecycle Advisories

Network Insight Advisor eliminates manual time and effort by collecting and analyzing security advisory and other data from key sources and translating that data into usable alerts that are automatically streamed to the platform.

### Automate Timely Alerts on the Advisories and Devices that Matter

Instead of manually attempting to cross-reference individual advisories with different model and OS versions, Advisor delivers a curated feed of continuously updated rules and policies that highlight impacted devices in the context of your network. Customizable alerts identify devices that need further review, so your network and security experts can quickly isolate where remediation action is warranted and where action can be deferred.

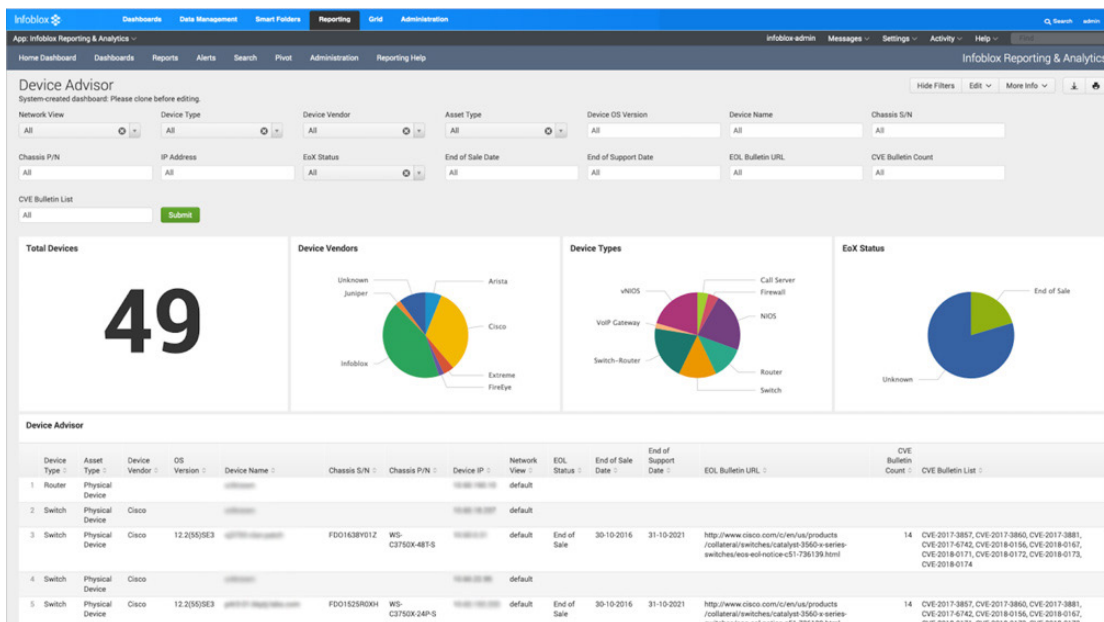


Figure 4: Device Advisor Dashboard, Reporting View

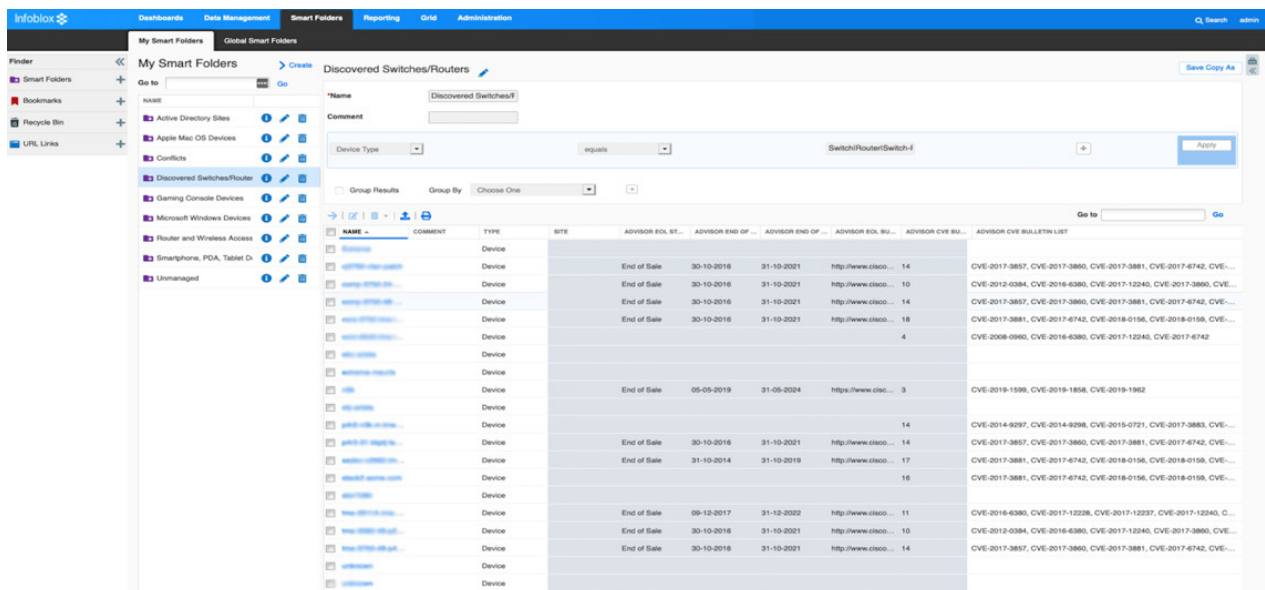
## NETWORK INSIGHT ADVISOR KEY BENEFITS

- **Visibility:** Identify vulnerable devices faster by providing immediate alerts of policy violations.
- **Security:** Automate discovery and alerting to reduce security risk and compliance issues.
- **Reliability:** Eliminate unnecessary manual processes and human errors by automating complex cross-tabulation.
- **Automation:** Track outdated and obsolete software and resolve problems faster via automated individual or bulk changes that with existing processes.

## Locate Unsupported Devices to Optimize Lifecycle Planning

Over time, particular device models and OS versions combinations may no longer be supported by the manufacturer. When this occurs, a greater risk of vulnerability and compliance issues arise. Network Insight Advisor automatically detects and reports when devices and software are reaching lifecycle milestones (e.g., end-of-life or end-of-support) to keep you current and ahead of upcoming changes.

Figure 5: Discovered Switches/Routers, Smart Folders View



NAME	TYPE	SITE	ADVISOR EOL ST...	ADVISOR END OF ...	ADVISOR END OF ...	ADVISOR CVE BU...	ADVISOR CVE BU...	ADVISOR CVE BULLETIN LIST
switch	Device							
switch-01	Device		End of Sale	30-10-2016	31-10-2021	http://www.cisco...	14	CVE-2017-3857, CVE-2017-3860, CVE-2017-3881, CVE-2017-4742, CVE...
switch-02	Device		End of Sale	30-10-2016	31-10-2021	http://www.cisco...	10	CVE-2012-0384, CVE-2016-6380, CVE-2017-12240, CVE-2017-3860, CVE...
switch-03	Device		End of Sale	30-10-2016	31-10-2021	http://www.cisco...	14	CVE-2017-3857, CVE-2017-3860, CVE-2017-3881, CVE-2017-4742, CVE...
switch-04	Device		End of Sale	30-10-2016	31-10-2021	http://www.cisco...	18	CVE-2017-3881, CVE-2017-4742, CVE-2018-0156, CVE-2018-0158, CVE...
switch-05	Device						4	CVE-2008-0960, CVE-2016-6380, CVE-2017-12240, CVE-2017-6742
switch-06	Device							
switch-07	Device							
switch-08	Device		End of Sale	05-05-2019	31-05-2024	https://www.cisc...	3	CVE-2019-1999, CVE-2019-1958, CVE-2019-1962
switch-09	Device							
switch-10	Device						14	CVE-2014-9297, CVE-2014-9298, CVE-2015-0721, CVE-2017-3883, CVE...
switch-11	Device		End of Sale	30-10-2016	31-10-2021	http://www.cisco...	14	CVE-2017-3857, CVE-2017-3860, CVE-2017-3881, CVE-2017-4742, CVE...
switch-12	Device		End of Sale	31-10-2014	31-10-2019	http://www.cisco...	17	CVE-2017-3881, CVE-2017-4742, CVE-2018-0156, CVE-2018-0158, CVE...
switch-13	Device						16	CVE-2017-3881, CVE-2017-4742, CVE-2018-0156, CVE-2018-0158, CVE...
switch-14	Device							
switch-15	Device		End of Sale	09-12-2017	31-12-2022	http://www.cisco...	11	CVE-2016-6380, CVE-2017-12239, CVE-2017-12237, CVE-2017-12240, C...
switch-16	Device		End of Sale	30-10-2016	31-10-2021	http://www.cisco...	10	CVE-2012-0384, CVE-2016-6380, CVE-2017-12240, CVE-2017-3860, CVE...
switch-17	Device		End of Sale	30-10-2016	31-10-2021	http://www.cisco...	14	CVE-2017-3857, CVE-2017-3860, CVE-2017-3881, CVE-2017-4742, CVE...
switch-18	Device							
switch-19	Device							

## Eliminate Device Vulnerabilities Quickly and Easily

Infoblox helps enterprises reduce network device and software vulnerability risks with a complete, automated solution including:

1. **Automated discovery** of network devices including vendor, model and OS version.
2. **Continuous updates** of advisories, PSIRTS, bulletins and end-of-sale/support information fed into the platform.
3. **Automated cross-tabulation** of advisories to specific model/OS versions.
4. **Alerts** when vulnerabilities and non-supported devices are identified.
5. **Historic reporting** with Infoblox's built-in reporting engine for trending and alerting.

## Network Insight Advisor Summary

Network Insight Advisor takes Network Insight, the market leading, integrated DDI multi-vendor discovery and switch-port management solution, and adds automated device Security, Lifecycle Notification and Compliance as an add-on service. By leveraging Network Insight's extensive discovery engine, Advisor adds up-to-date risk and vulnerability information to improve compliance and operational security management. Infoblox Network Insight with Advisor provides you with the next level network discovery, visibility, automation, compliance and control solution that saves you time and money and simplifies your network management workload.



Infoblox enables next level network experiences with its Secure Cloud-Managed Network Services. As the pioneer in providing the world's most reliable, secure and automated networks, we are relentless in our pursuit of network simplicity. A recognized industry leader, Infoblox has 50 percent market share comprised of 8,000 customers, including 350 of the Fortune 500.

Corporate Headquarters | 3111 Coronado Dr. | Santa Clara, CA | 95054  
+1.408.986.4000 | 1.866.463.6256 (toll-free, U.S. and Canada) | [info@infoblox.com](mailto:info@infoblox.com) | [www.infoblox.com](http://www.infoblox.com)



© 2019 Infoblox, Inc. All rights reserved. Infoblox logo, and other marks appearing herein are property of Infoblox, Inc. All other marks are the property of their respective owner(s). DS-0200-02 1902